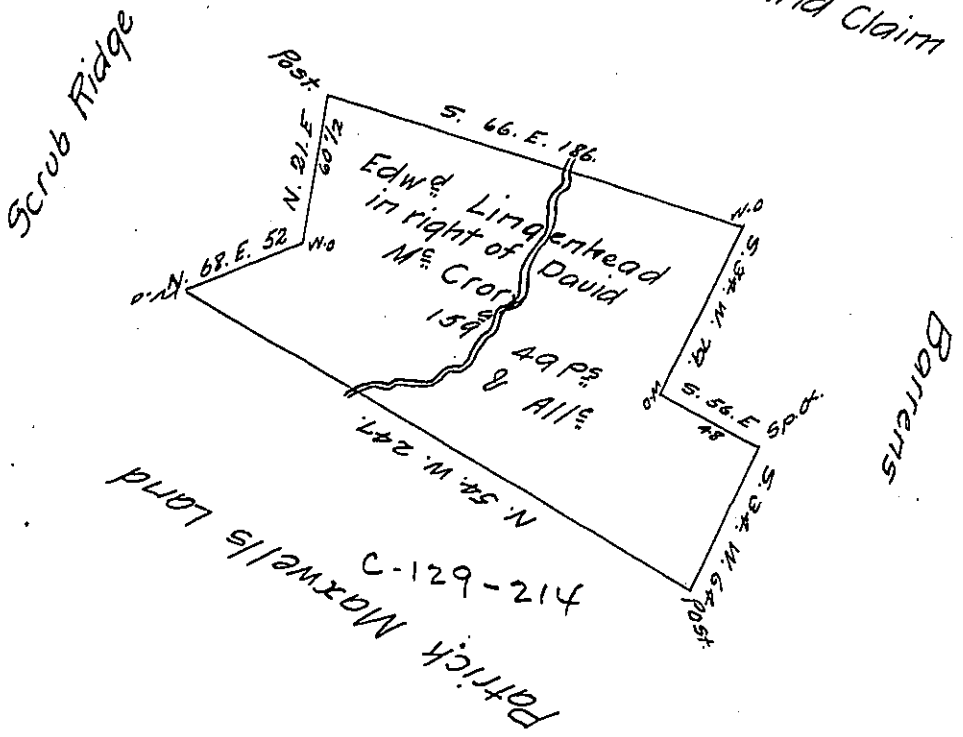


John & Hugh M<sup>e</sup>. Clelland Claim



Situated in Air Township in the County of Bedford Containing 159

Acres 49 perches & the Usual allowance of Six P<sup>e</sup> Cent for Roads &

(It being the same Land on which a Survey was made for David M<sup>e</sup>. Crook

On Location Dated May 2<sup>d</sup> 1767 N<sup>o</sup> 3591 & Patented to Edward Linger-

head March 13<sup>th</sup> 1788 Which Survey was found to be erroneous.) Resur-

vayed May 15<sup>th</sup> 1798 by Order of the Board of Property Dated March 28<sup>th</sup>

1797

To Daniel Brodhead Esq<sup>r</sup> }  
Surveyor General

George Woods D.S.

IN TESTIMONY that the above is a copy of the original remaining on file in the Department of Internal Affairs of Pennsylvania, made conformably to an Act of Assembly approved the 16th day of February, 1833, I have hereunto set my Hand and caused the Seal of said Department to be affixed at Harrisburg, this seventh day of September 1905

*Isaac P. Brown*  
Secretary of Internal Affairs.